
April 9th, 2026

**Board of Directors Members Present
in Person:**

Members Present via MS Teams:

**North Sound Behavioral Health
Administrative Services Organization
(North Sound BH-ASO) Staff Present:**

Guests Present:

- 1. Call to Order and Introductions** – Chair
- 2. Tribal Acknowledgement** – Chair
[Tribal Behavioral Health | North Sound BH-ASO \(nsbhaso.org\)](https://www.nsbhaso.org)
- 3. Revisions to the Agenda** – Chair
- 4. Approval of the March 12th, 2026, Minutes, Motion #26-13** – Chair... Attachment
- 5. Comments & Announcements from the Chair** - Chair
- 6. Reports from Members** - Chair
- 7. Comments from the Public** - Chair
- 8. Report from the Advisory Board**
There was no meeting in April, so no report is available
- 9. Report from the Finance Officer** Attachments
Kim Nakatani, Senior Accountant
- 10. Report from the Governance Operations Committee** - Chair

All matters listed with the Consent Agenda have been distributed to each Member for reading and study, are considered to be routine, and will be enacted by one action of the Board of Directors with no separate discussion. If separate discussion is desired, the item may be removed from the Consent Agenda and placed on the Regular Agenda by request of a Member.

Motion #26-14

- To review and approve the North Sound Behavioral Health Administrative Services Organization claims paid from March 1st, 2026, through March 31st, 2026, in the amount of \$5,777,237.08.
- Payroll for the month of March in the amount of \$243,779.12 and associated employer benefits in the amount of \$128,679.24.

11. Action Items – Lindsay Lopes, Deputy Director

For Board Approval

Health Care Authority

- North Sound BH-ASO received an off-cycle amendment to its contract with the Health Care Authority (HCA-NS BH-ASO-K8347 AMD 3), resulting in a **net funding decrease of \$401,260**. Key changes include:
- This amendment provides the following funding adjustments:
 - Funding Carry-Over
 - **\$495,225 – System of Care (SOC) Grant (Carry-Over Funds)**
 - Supports enhancements to existing youth Mobile Rapid Response Crisis Teams (MRRCT) in Snohomish County.
 - Carry-over funds do not impact budget.
 - Funds available: January 1, 2026 – September 29, 2026
 - Funding Increase
 - **\$50,000 – Tribal Designated Crisis Responder (DCR) Academy & Technical Assistance**
 - Supports training and technical assistance Tribal DCRs.
 - Funds available: January 1, 2026 – June 30, 2026
 - Funding Reduction/Correction
 - **(\$130,142) – Client Services in Facilities**
 - Adjustment to correct an over-allocation included in the January 1, 2026 amendment.
 - Original amount: \$795,516 → Revised amount: \$665,142.
 - Funds available: January 1, 2026 – June 30, 2026
 - **(\$320,879) – Crisis Endorsement Teams**
 - Adjustment to correct an over-allocation included in the January 1, 2026 amendment.
 - Original amount: \$616,346 → Revised amount: \$295,467.00.
 - Funds available: January 1, 2026 – June 30, 2026

- No changes to program scope or service delivery are associated with this amendment beyond the funding adjustments noted above.

Motion #26-15

HCA-NS BH-ASO-K8347 AMD 3 providing a net funding decrease of \$401,260.00, including addition funding for Tribal Designated Crisis Responder Academy and Technical Assistance (1/1/26 – 6/30/26), reduction in Client Services in Facilities funding, as presented (1/1/26 – 6/30/26), and reduction in Crisis Endorsement Teams funding.

Compass Health

- This is the downstream contract to add the \$495,225 of carry-over funds from HCA for enhancements to existing youth Mobile Rapid Response Crisis Teams (MRRCT) in Snohomish County
- These funds are to be used to enhance the existing Child, Family and Youth Crisis Team with Compass Health.

Motion #26-16

NS BH-ASO-COMPASS HEALTH-ICCN-26 AMD 2 to approve one-time funding in the amount of \$495,083 for youth MRCCT enhancements for the period of January 1, 2026, to September 29, 2026.

Salish Sea Psychotherapy and Consultation

- North Sound BH-ASO is currently partnered with Salish Sea Psychotherapy and Consultation to provide Tribal DCR Technical Assistance.
- This motion provides additional funding in the amount of \$15,000.00 for March 2026 and April 2026 invoices.

Motion #26-17

NS BH-ASO-SSPC-PSC-26 AMD 1 to provide Tribal Designated Crisis Responder Technical Assistance. The term of the contract is January 1, 2026 – June 30, 2026. The maximum consideration of this contract is \$15,000.00.

Evergreen Recovery Centers

- North Sound BH-ASO, in partnership with San Juan County Health & Community Services and the San Juan County Sheriff's Office, sought proposals for the provision of a Behavioral Health Co-Responder Program in San Juan County Washington.
- The program aims to provide behavioral health crisis intervention services by embedding a licensed behavioral health professional within law enforcement teams to respond to incidents involving individuals with mental health issues or behavioral crises.
- Two providers submitted applications and Evergreen Recovery Centers was the successful bidder.
 - The submitted annual budget is \$222,655.46, which does include one-time costs.

Motion #26-18

NS-BH-ASO-ERC-ICN-26 AMD 1 to approve Federal Block Grant (FBG) funding in the amount of \$55,663 for a BH Co-Responder in San Juan County for the period of April 1, 2026 – June 30, 2026.

12. Report from the Executive Director

JanRose Ottaway Martin, Executive Director

Crisis Metrics Report.....Attachment

13. Adjourn - Chair

Next Meeting: May 14th, 2026

Board of Directors

Meeting Minutes

March 12th, 2026

Board of Directors Members Present in Person:

- Barry Buchanan, Board Chair, County Council; Whatcom County
- Justin Paulsen, County Council; San Juan County/New Board Chair taking over for Barry Buchanan
- George Kosovich, Manager, Community Services Division, designated alternate for Peter Browning, Commissioner; Skagit County
- Amanda Franke, Human Services, designated alternate for Dave Somers, County Executive; Snohomish County

Members Present via MS Teams:

- Malora Christensen, Response Systems Division Manager, designated alternate for Satpal, Sidhu, County Executive; Whatcom County
- Jami Mitchell, Human Services, designated alternate for Justin Paulsen, County Council; San Juan County
- Lynda Austin, Island County Human Services, designated alternate for Jill Johnson, Commissioner; Island County
- Cynthia Foley: Senior Legislative Analyst, designated alternate for Strom Peterson, County Council; Snohomish County

North Sound Behavioral Health Administrative Services Organization (North Sound BH-ASO) Staff Present:

- JanRose Ottaway Martin, Executive Director
- Lindsay Lopes, Deputy Director
- Kim Nakatani, Sr. Accountant
- Lisa Hudspeth, Contracts Manager
- Keyna Strube, Accounting Specialist
- Maria Arreola, Sr. Admin Assistant
- Joanie Wenzl, Clerk of the Board

Guests Present:

No guests were present

Call to Order and Introductions – Chair

The new Chair, Justin Paulsen, had the board members introduce themselves

Tribal Acknowledgement – Chair

[Tribal Behavioral Health | North Sound BH-ASO \(nsbhaso.org\)](https://nsbhaso.org)

The Chair read the Tribal Acknowledgement

Revisions to the Agenda – Chair

No revisions to the agenda were requested

Approval of the February 12th, 2026, Minutes, Motion #26-08– Chair

Barry Buchanan moved the motion for approval, George Kosovich seconded, all in favor, none opposed, motion #26-08 carried

Comments & Announcements from the Chair – Chair

The Chair noted that no decisions were made during the Governance and Operations Meeting other than to forward on the financials to the full board

Reports from Members – Chair

Board Members gave updates on the behavioral health efforts in their respective counties

Comments from the Public – Chair

There were no comments from the public, as none were in attendance

Report from the Advisory Board

JanRose Ottaway Martin gave the report from the Advisory Board, as the Advisory Board Chair was no in attendance

Report from the Finance Officer

Kim Nakatani, Senior Accountant

Kim gave the Financial Report. There were no questions

Report from the Governance Operations Committee – Chair

All matters listed with the Consent Agenda have been distributed to each Member for reading and study, are considered to be routine, and will be enacted by one action of the Board of Directors with no separate discussion. If separate discussion is desired, the item may be removed from the Consent Agenda and placed on the Regular Agenda by request of a Member.

Motion #26-09

To review and approve the North Sound Behavioral Health Administrative Services Organization claims paid from February 1st, 2026, through February 28th, 2026, in the amount of \$5,673,241.31.

- Payroll for the month of February in the amount of \$260,618.63 and associated employer benefits in the amount of \$134,047.00

Barry Buchanan moved the motion for approval, Amanda Franke seconded, all in favor, non-opposed, Motion #26-09 carried

Action Items – Lisa Hudspeth, Contracts Manager

For Board Approval

Compass Health

- North Sound BH-ASO received dedicated crisis stabilization funding in the amount of \$1,192,428 in its January 1, 2026, contract with the Health Care Authority.
 - This funding is designated to support services for non-Medicaid individuals receiving care in newly established crisis stabilization facilities within the North Sound region.
 - The funding allocation was calculated based on the anticipated opening of new crisis stabilization facilities operated by Compass Health (Marc Healing Center – Snohomish County) and Pioneer Human Services (STAR Facility – Skagit County).
 - At this time, the opening date for the Pioneer Human Services crisis stabilization facility is unknown.
 - Currently, continuation or expansion of this funding beyond the initial allocation is unknown and subject to future HCA budget decisions.
- Compass Health recently opened a 16-bed crisis stabilization unit (CSU) at the Marc Healing Center in Everett, WA.
 - One-time funding in the amount of \$750,000 will be allocated for the period of January 1, 2026 to June 30, 2026.
 - This funding will not roll over beyond this period and North Sound will reassess funding allocations once HCA budgets are known for the next contract cycle.

Motion #26-10

NS BH-ASO-COMPASS HEALTH-ICCN-26 AMD 1 to approve one-time funding in the amount of \$750,000 for crisis stabilization services for the period of January 1, 2026, to June 30, 2026.

Amanda Franke moved the motion for approval, George Kosovich seconded, all in favor, none opposed, Motion #26-10 carried

Snohomish County

- In 2025, Snohomish County set aside \$3,000,000 in one-time only funding from the Affordable Housing and Behavioral Health Sales Tax Fund to support start-up and initial operating expenses incurred by Sea Mar Community Health Centers for the Lynnwood Crisis Care Facility.
- North Sound BH-ASO will utilize a 5% admin rate (\$150,000).
- North Sound BH-ASO must first expend all existing state and other funding allocated for operations at the Lynnwood Crisis Care Facility prior to utilizing the Snohomish County funding.
- The period for this one-time funding is January 1, 2025, to December 31, 2026.

Motion #26-11

BH-25-60-01-426 providing one-time funding in the amount of \$3,000,000 for the period of January 1, 2025, to December 31, 2026, to support start-up and initial operating expenses for the Lynnwood Crisis Care Facility.

Barry Buchanan moved the motion for approval, George Kosovich seconded, all in favor, none opposed, motion #26-11 carried

Sea Mar Community Health Centers

- This motion authorizes the downstream distribution of one-time funding received from Snohomish County in the amount of \$2,850,000 to Sea Mar Community Health Centers to support start-up and initial operating expenses at the Lynnwood Crisis Care Facility.
- Sea Mar Community Health Centers must first expend all existing state and other funding allocated for operations at the Lynnwood Crisis Care Facility prior to utilizing this funding.

Motion #26-12

NS-BH-ASO-SEA MAR-ICN-26 AMD 2 providing one-time funding in the amount of \$2,850,000 for the period of January 1, 2026, to December 31, 2026, consistent with the terms of the Snohomish County funding agreement.

George Kosovich moved the motion for approval, Barry Buchanan seconded, all in favor, none opposed, motion #26-12 carried

Report from the Executive Director

JanRose Ottaway Martin, Executive Director

JanRose gave an update on House Bill (HB) 1813 and the National Committee for Quality Assurance (NCQA) standards. She also spoke to the coordination of meetings with Health Care Authority (HCA), state ASO meetings, and the respective provider meetings, inclusive of the contracting and delegation components as well as the required documents relative to moving forward with HB1813.

Crisis Metrics Report

The Crisis Metrics Report was in each members' meeting packet for review

Adjourn – 2:15 p.m.

Next Meeting: April 9th, 2026

North Sound Behavioral Health Administrative Services Organization
April 9th, 2026
Board of Directors Financial Notes
March 2026 Financial Statements

HIGHLIGHTS

1. The ratio of budget to actual revenues for State, Medicaid, MHBG, and SABG funds reflects slight unfavorable variances, primarily due to timing differences between billings and deposits. Deposits from the Health Care Authority (HCA) are beginning to occur at a more consistent cadence. Budget variances are largely attributable to late payments and provider billing delays. As a result of these timing differences, overall service expenses are currently below budgeted levels.
2. The Revenue and Expense Statement remains stable as of the end of February, reflecting a net loss of \$332,320. Variations in the MHBG and SABG fund balances are primarily due to fluctuations in billing and reimbursement timing from the Health Care Authority (HCA). Overall, revenues continue to sufficiently cover expenses.

As of December 31, 2025, the General Fund balance was \$8,186,221. The minimum required reserve is \$3,065,156 and the maximum allowed reserve is \$6,130,213.

3. The Medicaid fund balance is currently negative due to timing differences between provider billing and MCO payments. MCO payments are typically remitted at the beginning of the month, while the related expenses are not recognized until the following month. This timing difference temporarily reduces the fund balance until the corresponding MCO payments are recorded.

NOTES

1. We are presenting the financial statements for March 2026 for North Sound Behavioral Health Administrative Services Organization.
2. These monthly statements are prepared for the Board's use only. They provide a snapshot of expenses and revenue for a single calendar month compared with a hypothetical "year to date" projection. However, neither revenue nor expenditures occur on an equal 1/12 amount each month.

3. The North Sound BH-ASO adopts “calendar year” budgets, the funding allocations from the state is a state fiscal year basis [with adjustments every 6 months]. The exceptions are Federal Block Grant Funds which are allocated for the entire fiscal year.
4. Revenues and expenses are managed independently within each of the major funds, categories: Medicaid, State General Fund, Mental Health Block Grant, and Substance Abuse Block Grant.
5. Within ‘State General Funds’, allocations are further subdivided between general state funds, and the multiple “Proviso” funds allocated for specific services.
6. We have added two new lines at the bottom of the “Revenue and Expense” tab which shows the beginning and ending fund balance within each fund category for the state fiscal year. Also added are additional lines at the bottom to show the Net Income from Operations before the transfer of funds to the BHO.
7. The Budget to Actuals statement includes notes on areas where there is a variance between the hypothetical year-to-date budget and actual revenues and expenditures. Additional lines at the bottom show the transfer of funds separate from the normal operations.

NORTH SOUND BEHAVIORAL HEALTH ADMINISTRATIVE SERVICE ORGANIZATION
PRELIMINARY REVENUE and EXPENSE STATEMENT for MARCH 2026*
BUDGET TO ACTUALS

<u>REVENUES</u>	2026 Budget	YTD 2026 Budget	YTD 2026 Actual	Variance Favorable (Unfavorable)
Intergovernmental Revenues				
MHBG*	1,261,032	315,258	372,764	57,506
SABG*	3,078,998	769,750	813,226	43,476
State Funds*	45,059,518	11,264,879	10,034,057	(1,230,823)
Medicaid (MCO)*	14,899,609	3,724,902	3,015,905	(708,997)
Total Intergovernmental Revenues	64,299,157	16,074,789	14,235,952	(1,838,837)
Misc. Revenue **				-
Interest Revenue	400,000	100,000	72,610	(27,390)
Use of Fund Balance	0			
TOTAL REVENUES	\$ 64,699,157	\$ 16,174,789	\$ 14,308,562	\$ (1,866,228)

EXPENDITURES

Budget Variances due to Fluctuations in Provider Invoicing and HCA Pay

Inpatient Treatment	\$ 1,700,000	425,000	\$ 377,684	47,316
ITA Judicial	2,854,976	713,744	519,977	193,767
Crisis Services	18,557,764	4,639,441	4,086,967	552,474
Crisis Teams - Children & Youth	2,416,259	604,065	884,586	(280,522)
MH Crisis Stabilization	800,000	200,000	18,336	181,664
E&T Services	1,016,506	254,126	434,716	(180,590)
E&T Discharge Planner	207,292	51,823	25,070	26,753
Jail Services	330,780	82,695	69,396	13,299
PACT Services	1,178,448	294,612	166,469	128,143
Assisted Outpatient Treatment			250,823	
Trueblood	223,944	55,986	41,387	14,599
BH Enhancement Funds	779,184	194,796	24,500	170,296
HOST	1,239,966	309,992	309,992	-
SnoCo Crisis Start up 32-Bed	779,498	194,875	45,415	149,460
Pilot per Proviso 13b Proviso Revenue Shift			69,245	
Crisis Endorsed Teams	4,679,952	1,169,988	834,919	335,069
MRSS - CYFT	744,426	186,107	95,547	90,560
988 - Enhanced Crisis Expenses (112)	1,230,988	307,747	113,786	193,961
MHBG Peer Bridger & State Funds	273,256	68,314	91,315	(23,001)
MHBG Expenditures ***	386,032	96,508	97,873	(1,365)
MHBG Co-Responder	875,000	218,750	138,532	80,218
MHBG PATH	207,459	51,865	57,897	(6,033)
HARPS Housing	707,380	176,845	129,823	47,022
DOC Housing	1,512,509	378,127	432,328	(54,201)
Proviso 86 Behavioral Health Housing	1,403,664	350,916	301,535	49,381
Governor Housing Voucher	25,000	6,250	10,076	(3,826)
Tribal DCR	93,000	23,250	23,197	53
DCA County Contracts	581,292	145,323	59,054	86,269
Recovery Navigator Program	2,204,829	551,207	933,109	(381,901)
Youth Inpatient Navigators			79,752	
SABG Peer Pathfinder	131,480	32,870	60,000	(27,130)
SABG Expenditures ****	100,000	25,000	67,463	(42,463)
SABG PPW Housing Support Services	400,000	100,000	74,375	25,625
SABG Opiate Dependency Outreach	1,407,314	351,829	275,108	76,721
SABG Engagement & Referral / Co-Responder	1,171,684	292,921	59,641	233,280
Withdrawal Management	2,546,956	636,739	453,177	183,562
Juvenile Drug Court	139,800	34,950	32,721	2,229
Client Services in New Crisis Stabilization Facilities	1,192,431	298,108		298,108
Client Services in Facilities	795,521	198,880		198,880
New Journey First Episode Psychosis	49,968	12,492	27,619	(15,127)
Other MH Services *****	1,434,153	358,538	690,577	(332,039)
Other SUD Services	1,532,000	383,000	795,781	(412,781)
Advisory Board	19,996	4,999	3,500	1,499
Subtotal - Services	57,930,708	14,482,677	13,263,269	1,219,408
Administration	6,368,449	1,592,112	1,377,612	214,500
TOTAL EXPENDITURES	\$ 64,299,157	\$ 16,074,789	\$ 14,640,881	\$ 1,433,908

Excess of Revenues Over (Under) Expenditure. \$ (332,320)

* THIS IS AN UNAUDITED STATEMENT

* Medicaid and State revenue are paid in advance. MHBG, SABG and SAMHSA revenue are paid on an expense reimbursement method. Expenses are recognized when the bill is received.

** Misc. Revenue Includes Room Rental Fees, Tribal Conference, Salish Contract

*** MHBG Includes other MHBG services. Does not include Crisis or E&T

**** SABG Includes other SABG services. Does not include Crisis

**NORTH SOUND BEHAVIORAL HEALTH ADMINISTRATIVE SERVICE ORGANIZATION
PRELIMINARY REVENUE and EXPENSE STATEMENT for MARCH 2026***

REVENUES	YTD	YTD	YTD	YTD	YTD
	2025	2025	2025	2025	2025
	Totals	Medicaid	State	MHBG	SABG
Intergovernmental Revenues					
MHBG*	372,764			372,764	
SABG*	813,226				813,226
State Funds*	10,034,057		10,034,057		
Medicaid (MCO)*	3,015,905	3,015,905			
Total Intergovernmental Revenues	14,235,952	3,015,905	10,034,057	372,764	813,226
Misc. Revenue **					
Interest Revenue	72,610		72,610		
TOTAL REVENUES	\$ 14,308,562	\$ 3,015,905	\$ 10,106,667	\$ 372,764	\$ 813,226

EXPENDITURES					
Inpatient Treatment	\$ 377,684		\$ 377,684		
ITA Judicial	519,977		519,977		
Crisis Services	4,086,967	1,801,413	2,285,554		
Crisis Teams - Children & Youth	884,586	614,786	269,800		
MH Crisis Stabilization	18,336		18,336		
E&T Services	434,716		434,716		
E&T Discharge Planner	25,070		25,070		
Jail Services	69,396		69,396		
PACT Services	166,469		166,469		
Assisted Outpatient Treatment	250,823		250,823		
Trueblood	41,387		41,387		
BH Enhancement Funds	24,500		24,500		
HOST	309,992		309,992		
SnoCo Crisis Start up 32-Bed	45,415		45,415		
Pilot per Proviso 13b Proviso Revenue Shift	69,245		69,245		
Crisis Endorsed Teams	834,919		834,919		
MRSS - CYFT	95,547		95,547		
988 - Enhanced Crisis Expenses (112)	113,786		113,786		
MHBG Peer Bridger & State Funds	91,315		47,776	43,539	
MHBG Expenditures ***	97,873			97,873	
MHBG Co-Responder	138,532			138,532	
MHBG PATH	57,897			57,897	
HARPS Housing	129,823		129,823		
DOC Housing	432,328		432,328		
Proviso 86 Behavioral Health Housing	301,535		301,535		
Governor Housing Voucher	10,076		10,076		
Tribal DCA	23,197		23,197		
DCA County Contracts	59,054		59,054		
Recovery Navigator Program	933,109		933,109		
Youth Inpatient Navigators	79,752		79,752		
SABG Peer Pathfinder	60,000				60,000
SABG Expenditures ****	67,463				67,463
SABG PPW Housing Support Services	74,375				74,375
SABG Opiate Dependency Outreach	275,108				275,108
SABG Engagement & Referral / Co-Responder	59,641				59,641
Withdrawal Management	453,177		453,177		
Juvenile Drug Court	32,721		32,721		
Client Services in New Crisis Stabilization Facilities			0		
Client Services in Facilities			0		
New Journey First Episode Psychosis	27,619		27,619		
Other MH Services *****	690,577		690,577		
Other SUD Services	795,781		795,781		
Advisory Board	3,500		3,500		
Subtotal - Services	13,263,269	2,416,199	9,972,642	337,841	536,587
Administration	\$ 1,377,612	250,963	1,126,650		
TOTAL EXPENDITURES	\$ 14,640,881	\$ 2,667,161	\$ 11,099,292	\$ 337,841	\$ 536,587

Net Income **\$ (332,320) \$ 348,744 \$ (992,625) \$ 34,922 \$ 276,639**

*Beginning Fund Balance 12/31/25 13,321,299 1,590,876 11,610,676 (265,581) 385,328
***Ending Fund Balance 12,988,979 1,939,620 10,618,051 (230,658) 661,967**
 Flexible GFS balance at 12/31/25 8,196,221

*Note: State Fund Balance also includes Proviso Fund Balances which are designated for specific expenditures

* THIS IS AN UNAUDITED STATEMENT

* Medicaid and State revenue are paid in advance. MHBG, SABG and SAMHSA revenue are paid on an expense reimbursement method. Expenses are recognized when the bill is received.

** Misc. Revenue Includes Room Rental Fees, Tribal Conference, Salish Contract

*** MHBG Includes other MHBG services. Does not include Crisis or E&T

**** SABG Includes other SABG services. Does not include Crisis

***** Other MH Services Includes CORS, FYSPT, Outpatient Services, PATH match

NORTH SOUND BH-ASO**Warrants Paid**

March 2026

Type	Date	Num	Name	Amount
Bill Pmt -Check	03/06/2026	614463	American Behavioral Health Systems, Inc	-625.40
Bill Pmt -Check	03/06/2026	614469	Asian Counseling Treatment	-7,273.37
Bill Pmt -Check	03/06/2026	614483	Bridgeways	-47,933.49
Bill Pmt -Check	03/06/2026	614497	CENTER FOR HUMAN SERVICES	-22,427.71
Bill Pmt -Check	03/06/2026	614503	Community Action of Skagit Co	-17,910.83
Bill Pmt -Check	03/06/2026	614504	Compass Health	-99,804.40
Bill Pmt -Check	03/06/2026	614507	Consejo Counseling	-91,255.26
Bill Pmt -Check	03/06/2026	614537	Evergreen Recovery	-200,413.46
Bill Pmt -Check	03/06/2026	614478	Fairfax Hospital	-4,834.50
Bill Pmt -Check	03/06/2026	614559	Holman Recovery Center	-34,680.00
Bill Pmt -Check	03/06/2026	614592	Lake Whatcom Center	-8,536.88
Bill Pmt -Check	03/06/2026	614597	Lifeline Connections	-17,073.76
Bill Pmt -Check	03/06/2026	614624	Mount Baker Presbyterian Church	-16,954.51
Bill Pmt -Check	03/06/2026	614653	Pioneer Center	-124,514.49
Bill Pmt -Check	03/06/2026	614735	Smokey Point Behavioral Hospital	-13,697.75
Bill Pmt -Check	03/06/2026	614650	St Joseph Medical Center, Peace Health	-34,265.42
Bill Pmt -Check	03/06/2026	614726	US Bank	-15,192.61
Bill Pmt -Check	03/06/2026	614730	Valley Cities Counseling	-4,186.00
Bill Pmt -Check	03/13/2026	614818	Access	-11,462.61
Bill Pmt -Check	03/13/2026	614847	Brigid Collins	-15,455.83
Bill Pmt -Check	03/13/2026	614876	City of Mt Vernon	-10,881.79
Bill Pmt -Check	03/13/2026	614887	Consejo Counseling	-25,936.33
Bill Pmt -Check	03/13/2026	615229	Culligan NW	-13.93
Bill Pmt -Check	03/13/2026	614944	Frontline Cleaning Services LLC	-445.00
Bill Pmt -Check	03/13/2026	614976	Island County Human Services	-83,768.63
Bill Pmt -Check	03/13/2026	615023	Lake Whatcom Center	-1,082.14
Bill Pmt -Check	03/13/2026	615032	Lifeline Connections	-43,571.24
Bill Pmt -Check	03/13/2026	615101	Opportunity Council	-18,672.33
Bill Pmt -Check	03/13/2026	615119	Pioneer Center	-26,443.15
Bill Pmt -Check	03/13/2026	615159	Sea Mar	-39,332.95
Bill Pmt -Check	03/13/2026	615183	Snohomish Co Human Services	-37,674.70
Bill Pmt -Check	03/13/2026	615184	Snohomish Co Juvenile	-21,042.89
Bill Pmt -Check	03/13/2026	615186	SRS Property Management	-12,326.58
Bill Pmt -Check	03/13/2026	615195	T-Mobile	-1,201.31
Bill Pmt -Check	03/13/2026	615199	Telecare Corporation	-23,842.51
Bill Pmt -Check	03/13/2026	615234	Whatcom County Health Department	-26,566.48
Bill Pmt -Check	03/13/2026	615240	Yellow Cab Co-op Inc.	-466.65
Bill Pmt -Check	03/20/2026	615271	Access	-635.44
Bill Pmt -Check	03/20/2026	615278	American Behavioral Health Systems, Inc	-8,775.00
Bill Pmt -Check	03/20/2026	615287	Asian Counseling Treatment	-2,185.22
Bill Pmt -Check	03/20/2026	615312	CENTER FOR HUMAN SERVICES	-18,029.70
Bill Pmt -Check	03/20/2026	615281	Cesa, Anna-Reimbursement	-81.20
Bill Pmt -Check	03/20/2026	615326	Compass Health	-2,132,544.47

NORTH SOUND BH-ASO**Warrants Paid**

March 2026

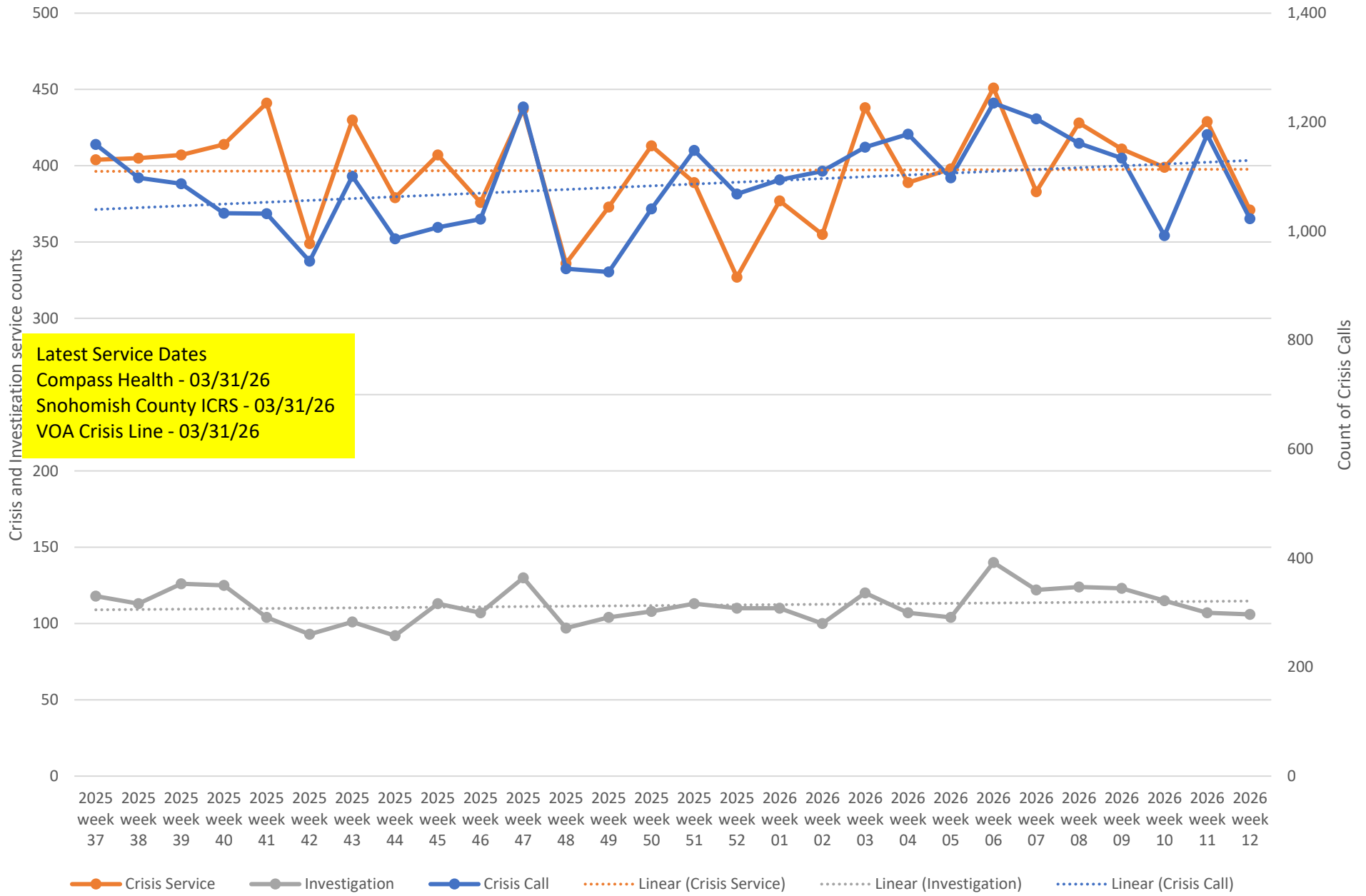
Bill Pmt -Check	03/20/2026	615329	Conquer	-41,718.91
Bill Pmt -Check	03/20/2026	615339	Davenport Group Inc	-29,376.26
Bill Pmt -Check	03/20/2026	615457	Drake, Megan-reimbursement	-103.60
Bill Pmt -Check	03/20/2026	615358	Firstline Communications (All Phase)	-1,199.58
Bill Pmt -Check	03/20/2026	615387	Island County Human Services	-325.80
Bill Pmt -Check	03/20/2026	615420	King County BHO	-416,404.56
Bill Pmt -Check	03/20/2026	615437	Lifeline Connections	-16,500.00
Bill Pmt -Check	03/20/2026	615439	Lopes, Lindsay	-191.08
Bill Pmt -Check	03/20/2026	615392	Ottaway Martin JanRose	-130.24
Bill Pmt -Check	03/20/2026	615497	Perinatal Support WA	-69,244.90
Bill Pmt -Check	03/20/2026	615533	Sea Mar	-6,081.60
Bill Pmt -Check	03/20/2026	615538	SHI	-6,437.32
Bill Pmt -Check	03/20/2026	615555	Skagit Valley Casino Resort	-1,100.00
Bill Pmt -Check	03/20/2026	615557	Snohomish Co Human Services	-142,541.29
Bill Pmt -Check	03/20/2026	615591	South Sound Behavioral Hospital	-11,704.05
Bill Pmt -Check	03/20/2026	615571	Sylvie, Stacy	-5,272.08
Bill Pmt -Check	03/20/2026	615579	Tulalip Tribes	-4,758.82
Bill Pmt -Check	03/20/2026	615593	Volunteers of America	-229,567.47
Bill Pmt -Check	03/20/2026	615604	Whatcom Co Superior Court	-50,552.00
Bill Pmt -Check	03/27/2026	615677	American Behavioral Health Systems, Inc	-22,827.10
Bill Pmt -Check	03/27/2026	615700	Bridgeways	-2,657.19
Bill Pmt -Check	03/27/2026	615698	Brigid Collins	-13,830.92
Bill Pmt -Check	03/27/2026	615711	Catholic Community Services	-3,029.07
Bill Pmt -Check	03/27/2026	615726	Collective Medical Technologies	-3,148.73
Bill Pmt -Check	03/27/2026	615728	Comcast	-279.87
Bill Pmt -Check	03/27/2026	615734	Consejo Counseling	-29,115.65
Bill Pmt -Check	03/27/2026	615765	Evergreen Recovery	-194,478.89
Bill Pmt -Check	03/27/2026	615785	Holman Recovery Center	-19,380.00
Bill Pmt -Check	03/27/2026	615819	Lake Whatcom Center	-136,979.48
Bill Pmt -Check	03/27/2026	615824	Lifeline Connections	-5,972.56
Bill Pmt -Check	03/27/2026	615840	Mount Baker Presbyterian Church	-14,374.54
Bill Pmt -Check	03/27/2026	615874	Pioneer Center	-139,016.54
Bill Pmt -Check	03/27/2026	615876	Pitney Bowes Pur Power	-84.60
Bill Pmt -Check	03/27/2026	615921	SALISH SEA PSYCHOTHERAPY & CONS	-14,513.18
Bill Pmt -Check	03/27/2026	615892	Sea Mar	-5,786.32
Bill Pmt -Check	03/27/2026	615901	Shred-it	-219.84
Bill Pmt -Check	03/27/2026	615915	Snohomish Co Human Services	-793,964.10
Bill Pmt -Check	03/27/2026	615916	Snohomish Co Juvenile	-11,360.78
Bill Pmt -Check	03/27/2026	615942	US Bank	-5,490.24
Bill Pmt -Check	03/30/2026	IGT	Skagit County Auditor	-3,500.00
				<u>-5,777,237.08</u>
				<u>-5,777,237.08</u>
				-5,777,237.08



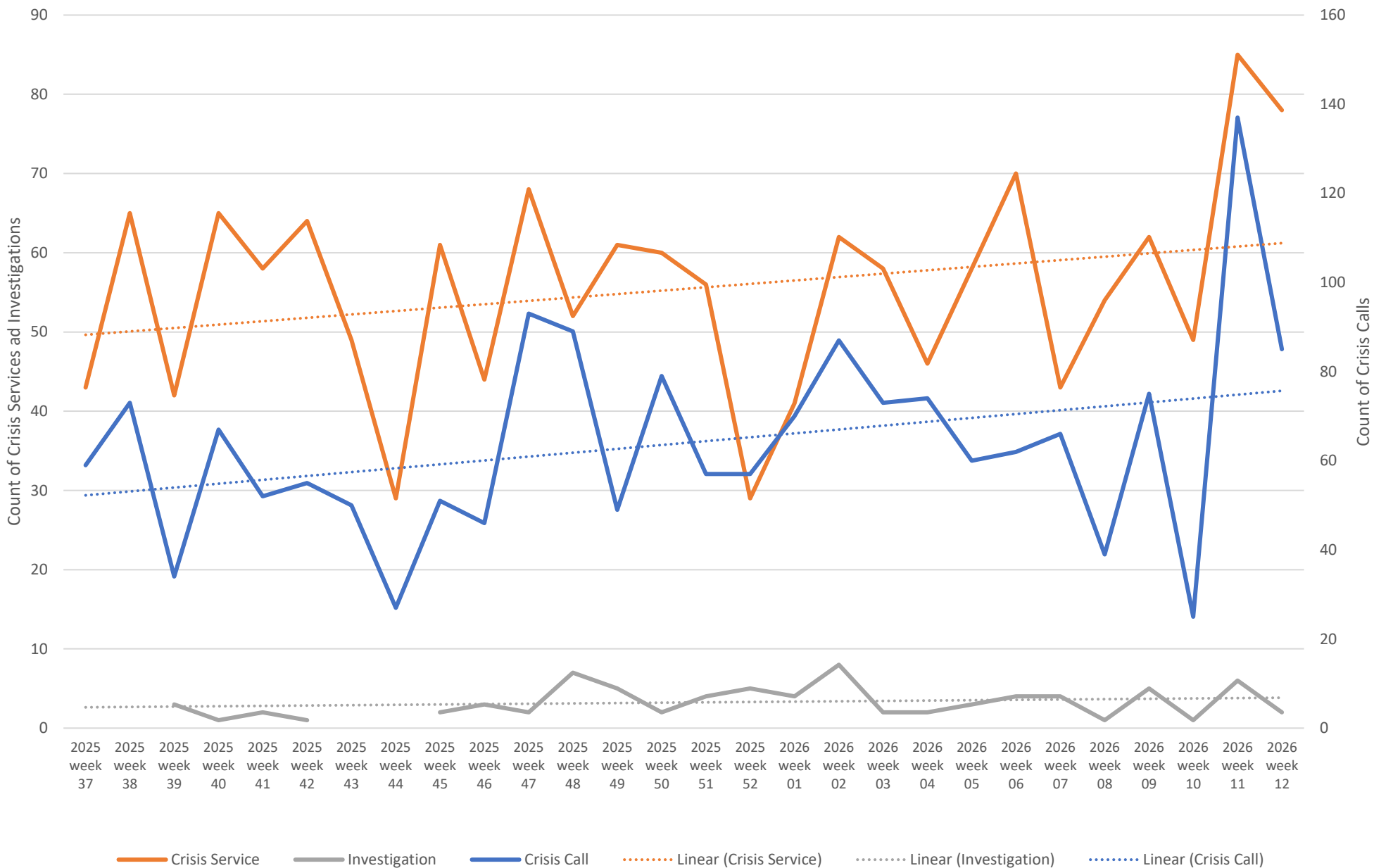
Weekly Crisis Capacity Indicator Snapshot

Page 2	Crisis Data - dates 09/07/25 to 03/21/26
Page 3	Crisis Data: Ages 0-17 - dates 09/07/25 to 03/21/26
Page 4	All DCR Dispatches - dates 09/07/25 to 03/21/26
Page 5	Endorsed Team BH Emergency Episodes (Linked to H2011 Crisis services with ET and UB mod) from 09/07/25 to 03/21/26
Page 6	Mobile Response Episodes (Telehealth Not included) from 09/07/25 to 03/21/26
Page 7	Telehealth Mobile Response Episodes Only from 09/07/25 to 03/21/26
Page 8	Weekly Staff Count - Staff providing Crisis or Investigation services 09/07/25 to 03/21/26
Page 9	Hospital placement locations (Invol and Vol) - No adjustment has been made for timely data - recent weeks likely low
Page 10	Telehealth only, crisis and investigation services from 09/07/25 to 03/21/26
Page 11	Crisis Service Unit Percent - Crisis Service units divided by Crisis units + Investigation units
Page 12	Place of Service -Crisis Services, percent of total by week
Page 13	Place of Service -Investigations, percent of total by week
Page 14	North Sound BH ASO Walkaway Chart 09/07/25 to 03/21/26

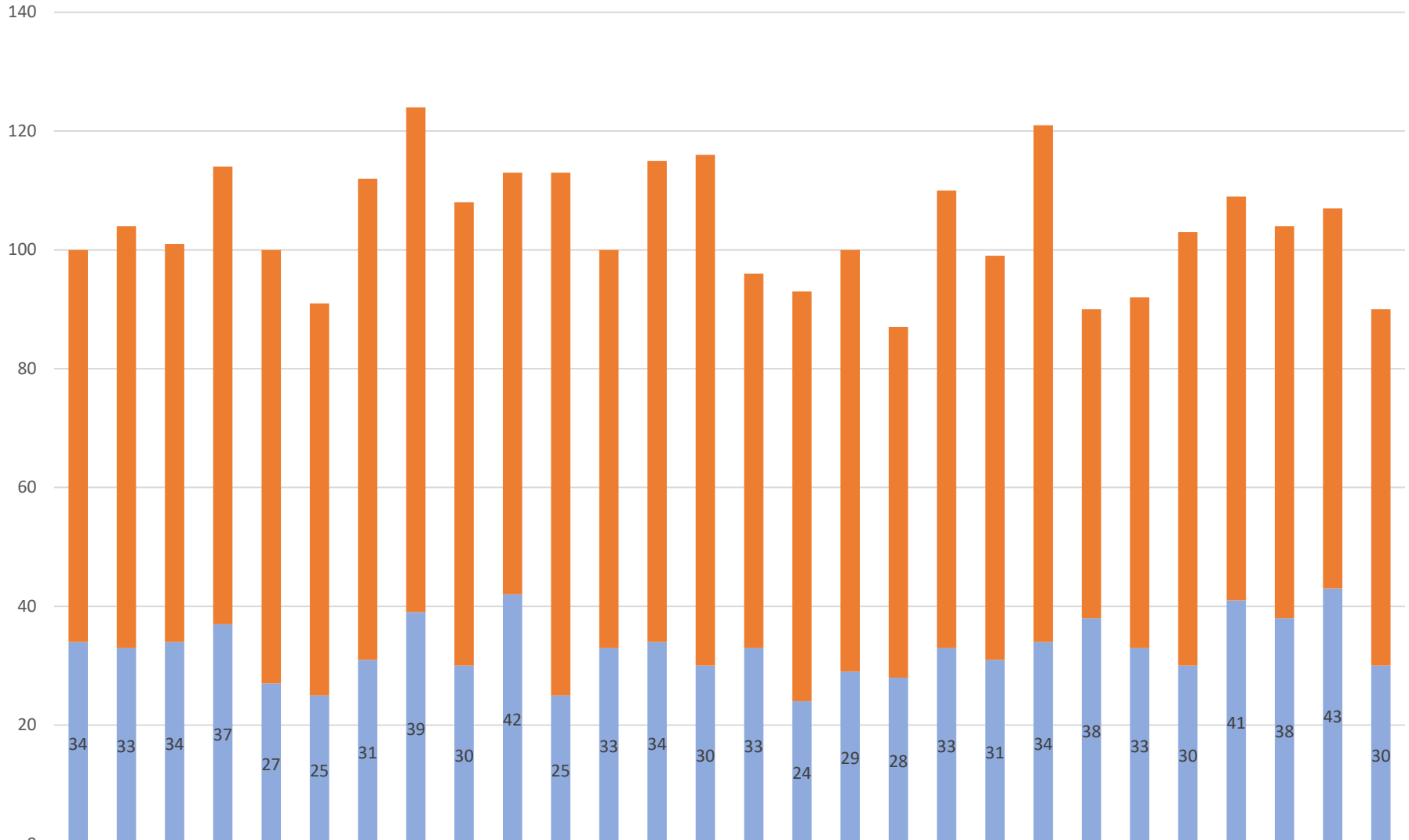
Crisis Data - dates 09/07/25 to 03/21/26



Crisis Data: Ages 0-17 - dates 09/07/25 to 03/21/26



All DCR Dispatches - dates 09/07/25 to 03/21/26



■ dispatch resulting in other outcome
■ dispatch resulting in detention

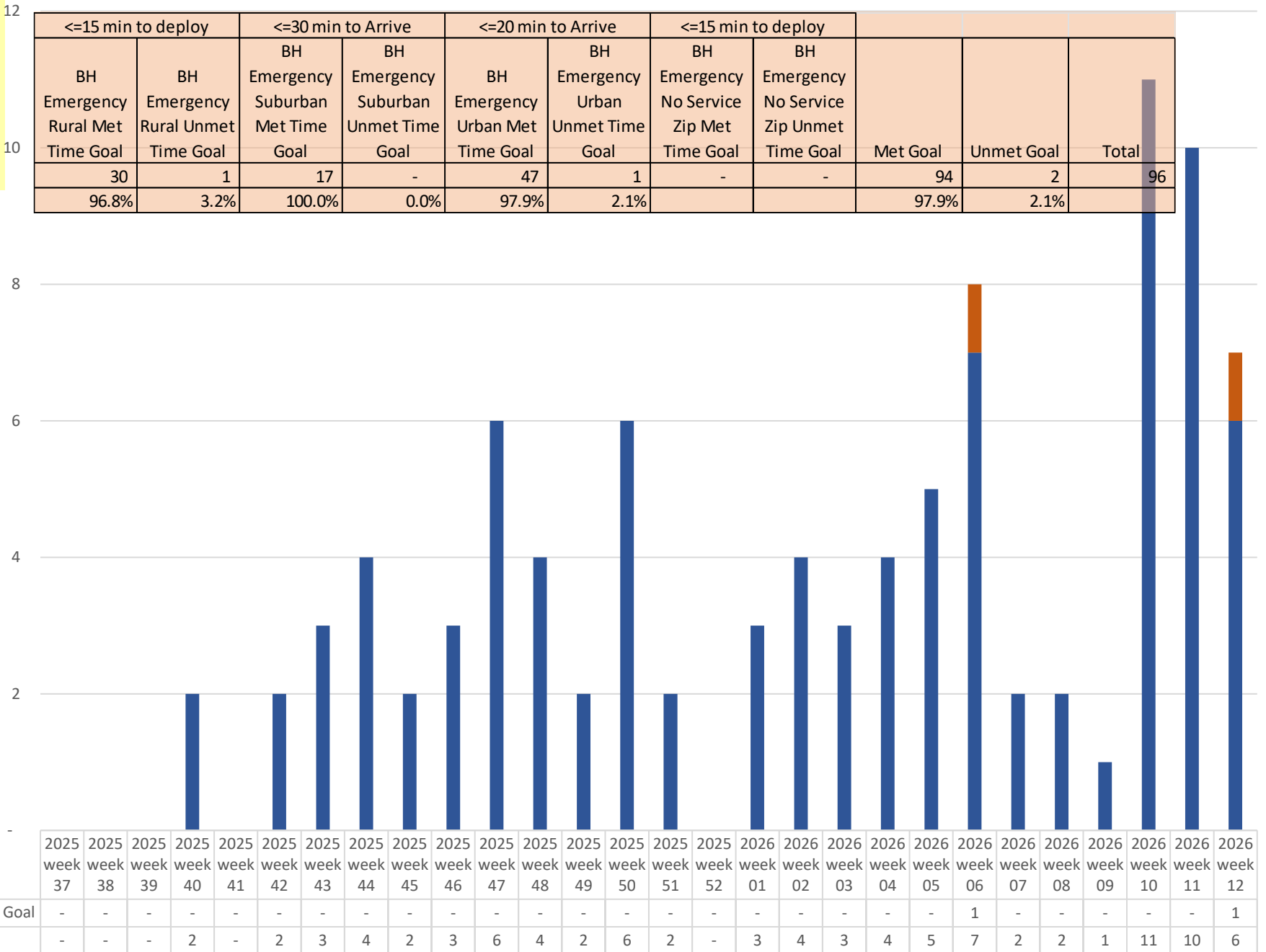
2025 week 27	66	34
2025 week 28	71	33
2025 week 29	67	34
2025 week 30	77	37
2025 week 31	73	27
2025 week 32	66	25
2025 week 33	81	31
2025 week 34	85	39
2025 week 35	78	30
2025 week 36	71	42
2025 week 37	88	25
2025 week 38	67	33
2025 week 39	81	34
2025 week 40	86	30
2025 week 41	63	33
2025 week 42	69	24
2025 week 43	71	29
2025 week 44	59	28
2025 week 45	77	33
2025 week 46	68	31
2025 week 47	87	34
2025 week 48	52	38
2025 week 49	59	33
2025 week 50	73	30
2025 week 51	68	41
2025 week 52	66	38
2026 week 01	64	43
2026 week 02	60	30

*Telehealth Endorsed Team Services not included (No requirement for Response time) Telehealth Episodes this Period left off this graph: 41

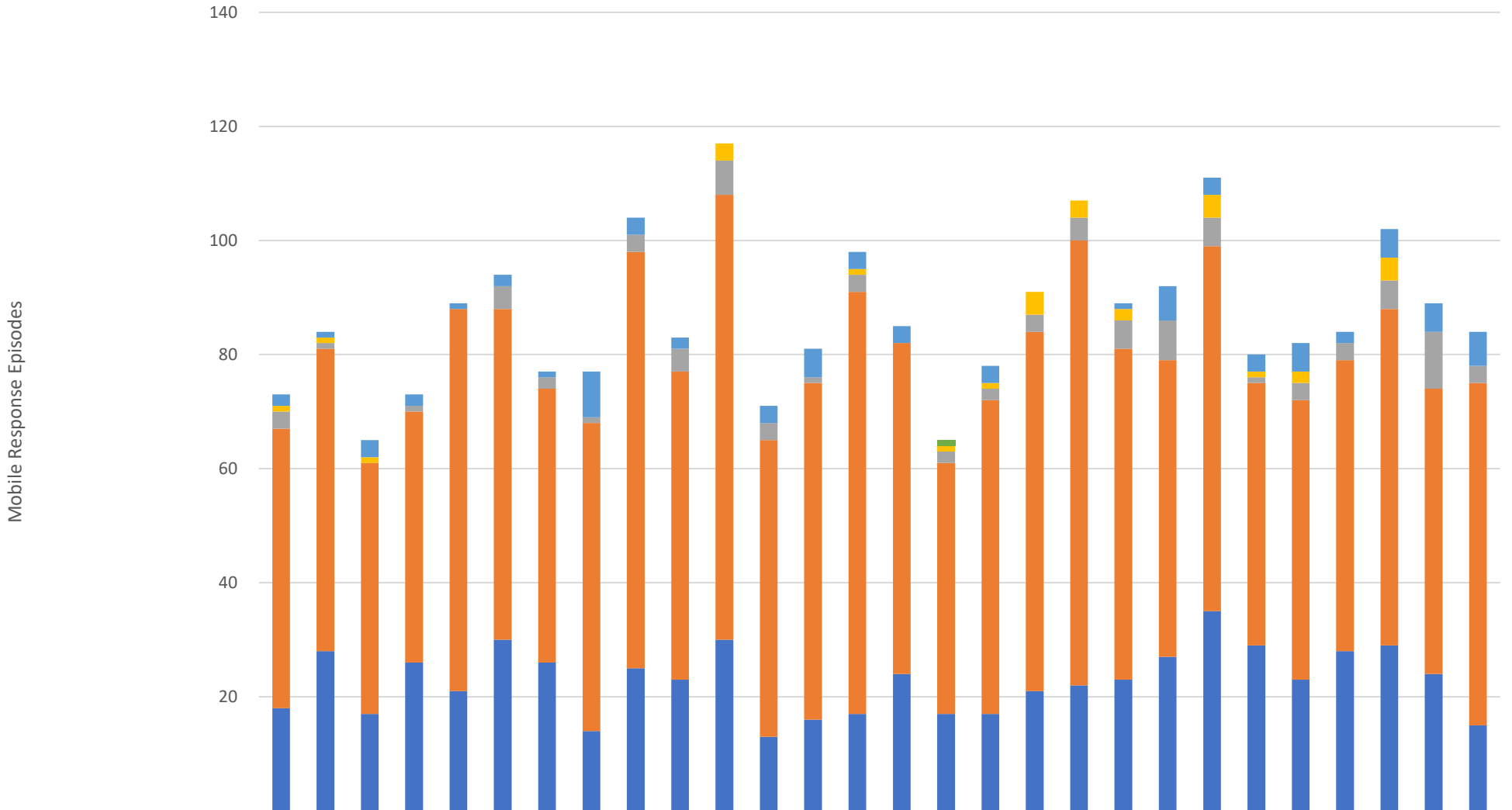
Endorsed Team BH Emergency Episodes (Linked to H2011 Crisis services with ET and UB mod) from 09/07/25 to 03/21/26

<=15 min to deploy		<=30 min to Arrive		<=20 min to Arrive		<=15 min to deploy				
BH Emergency Rural Met Time Goal	BH Emergency Rural Unmet Time Goal	BH Emergency Suburban Met Time Goal	BH Emergency Suburban Unmet Time Goal	BH Emergency Urban Met Time Goal	BH Emergency Urban Unmet Time Goal	BH Emergency No Service Zip Met Time Goal	BH Emergency No Service Zip Unmet Time Goal	Met Goal	Unmet Goal	Total
30	1	17	-	47	1	-	-	94	2	96
96.8%	3.2%	100.0%	0.0%	97.9%	2.1%			97.9%	2.1%	

Count of Mobile Response BH Emergency Episodes

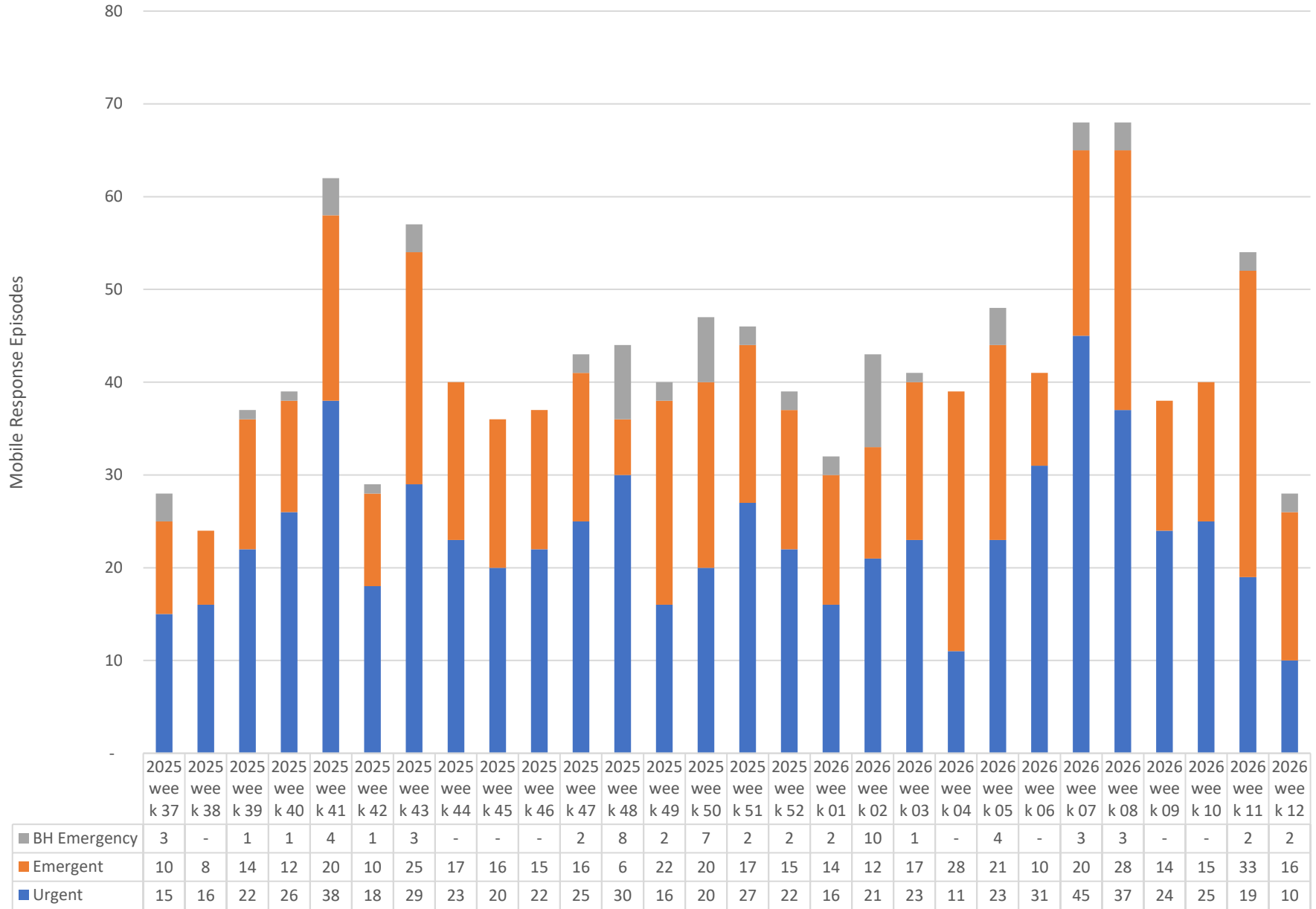


Mobile Response Episodes (Telehealth Not included) from 09/07/25 to 03/21/26

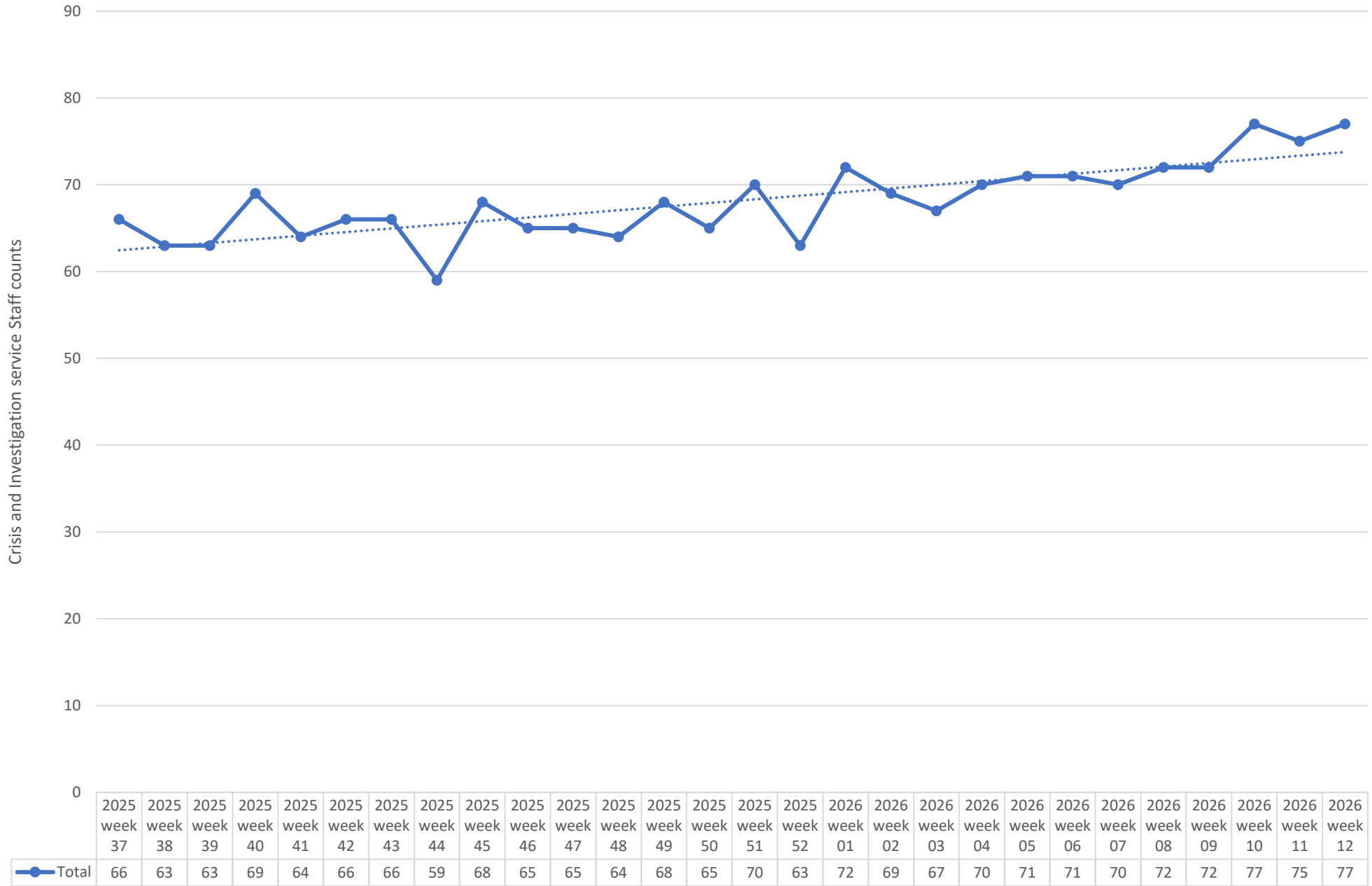


	2025 week 37	2025 week 38	2025 week 39	2025 week 40	2025 week 41	2025 week 42	2025 week 43	2025 week 44	2025 week 45	2025 week 46	2025 week 47	2025 week 48	2025 week 49	2025 week 50	2025 week 51	2025 week 52	2026 week 01	2026 week 02	2026 week 03	2026 week 04	2026 week 05	2026 week 06	2026 week 07	2026 week 08	2026 week 09	2026 week 10	2026 week 11	2026 week 12
BH Emergency No Service Zip	-	-	-	-	-	-	-	-	-	-	-	-	-	-	1	-	-	-	-	-	-	-	-	-	-	-	-	-
BH Emergency Urban	2	1	3	2	1	2	1	8	3	2	-	3	5	3	3	-	3	-	-	1	6	3	3	5	2	5	5	6
BH Emergency Suburban	1	1	1	-	-	-	-	-	-	-	3	-	-	1	-	1	1	4	3	2	-	4	1	2	-	4	-	-
BH Emergency Rural	3	1	-	1	-	4	2	1	3	4	6	3	1	3	-	2	2	3	4	5	7	5	1	3	3	5	10	3
Emergent	49	53	44	44	67	58	48	54	73	54	78	52	59	74	58	44	55	63	78	58	52	64	46	49	51	59	50	60
Urgent	18	28	17	26	21	30	26	14	25	23	30	13	16	17	24	17	17	21	22	23	27	35	29	23	28	29	24	15

Telehealth Mobile Response Episodes Only from 09/07/25 to 03/21/26

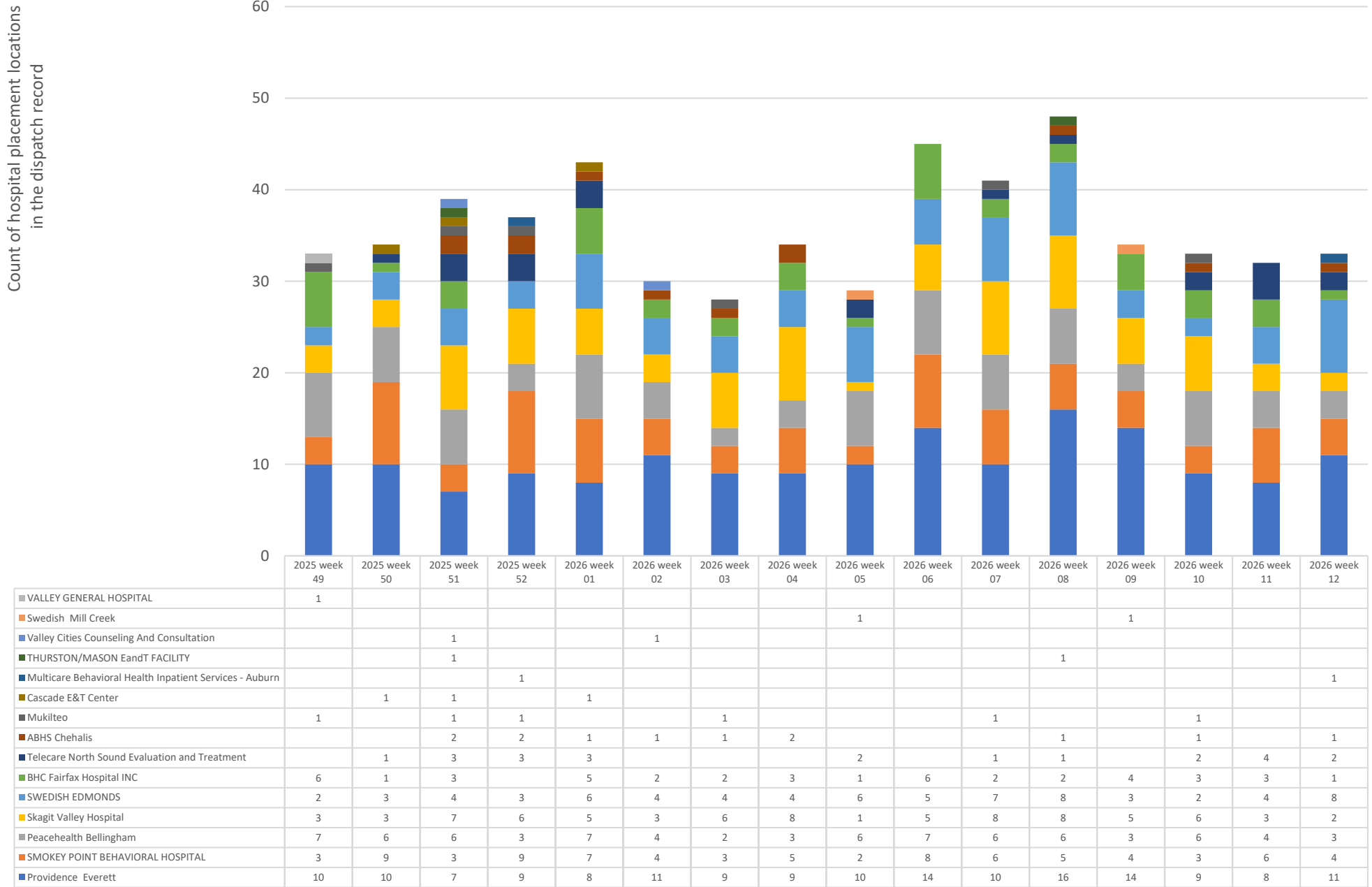


Weekly Staff Count - Staff providing Crisis or Investigation services 09/07/25 to 03/21/26

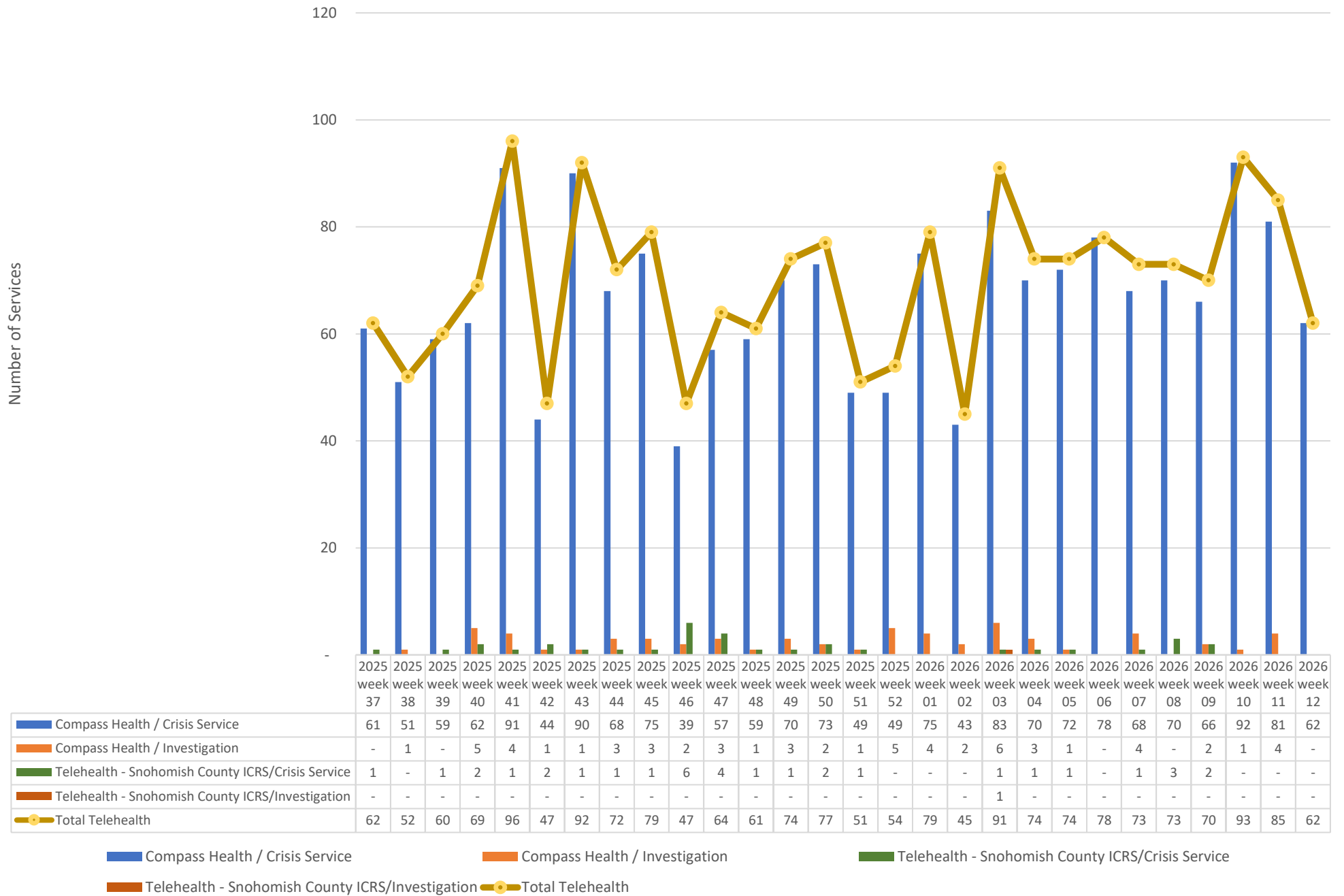


2026 week 12 ending 01/00/00

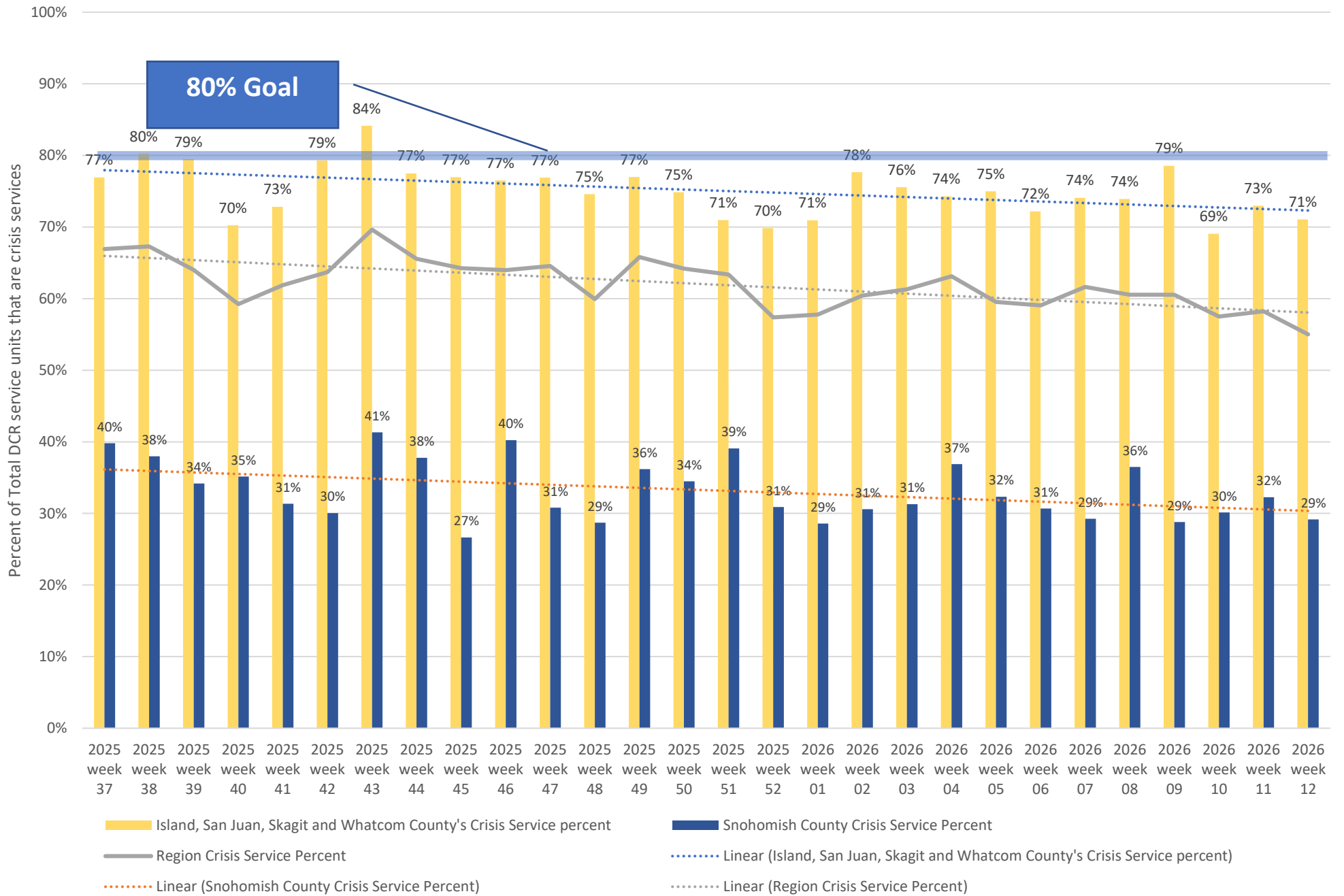
Hospital placement locations (Invol and Vol) - No adjustment has been made for timely data - recent weeks likely low



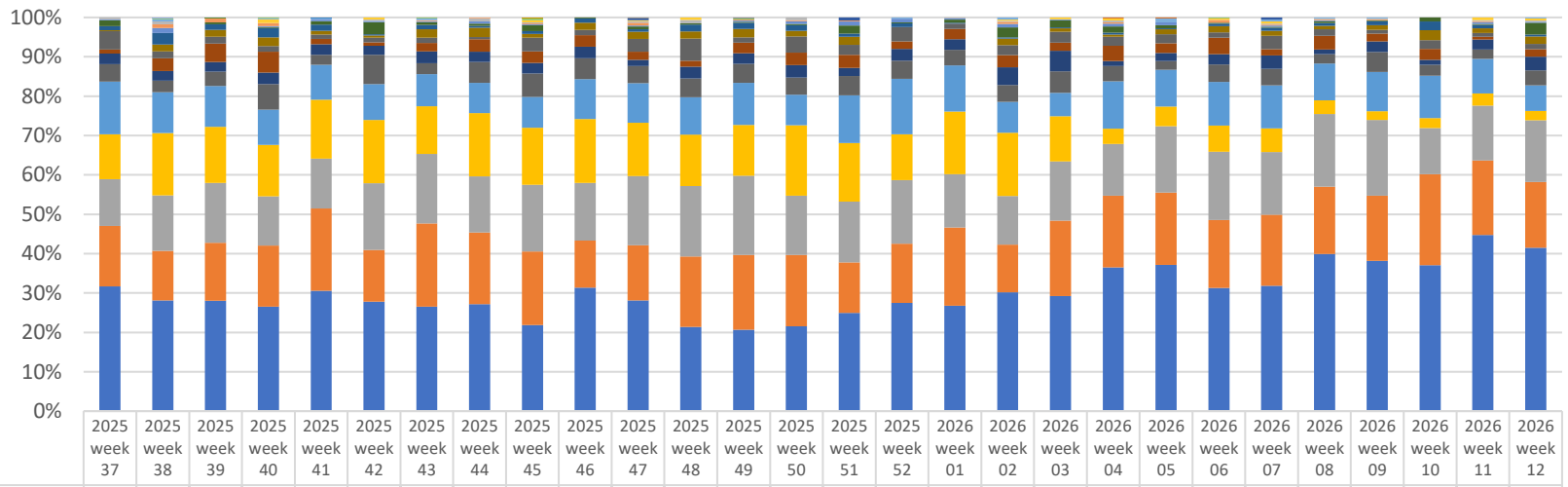
Telehealth only, crisis and investigation services from 09/07/25 to 03/21/26



Crisis Service Unit Percent - Crisis Service units divided by Crisis units + Investigation units

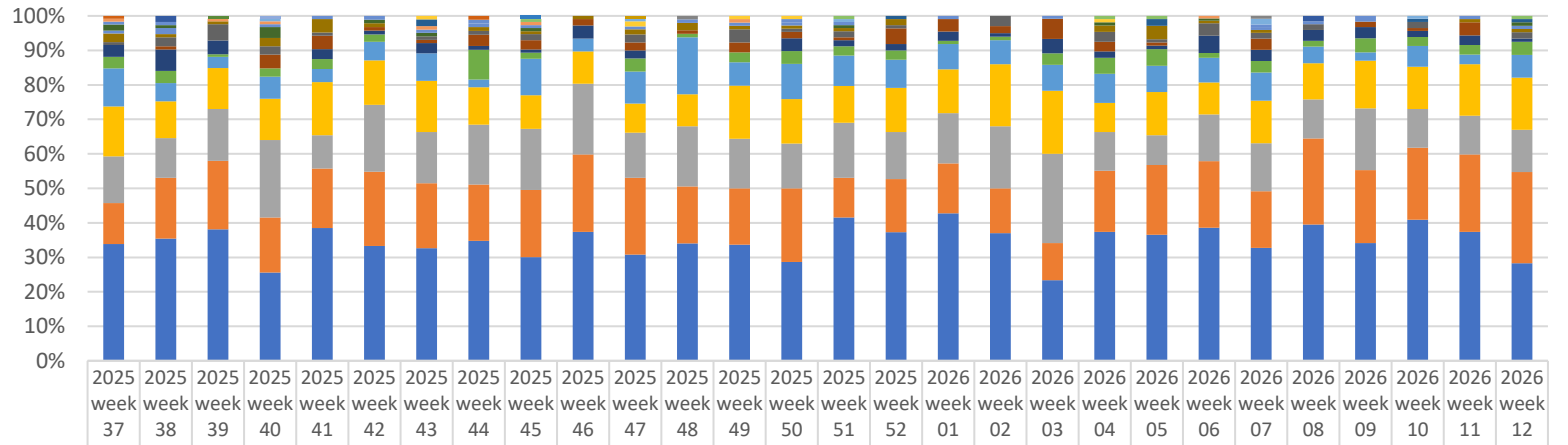


Place of Service -Crisis Services, percent of total by week



	2025 week 37	2025 week 38	2025 week 39	2025 week 40	2025 week 41	2025 week 42	2025 week 43	2025 week 44	2025 week 45	2025 week 46	2025 week 47	2025 week 48	2025 week 49	2025 week 50	2025 week 51	2025 week 52	2026 week 01	2026 week 02	2026 week 03	2026 week 04	2026 week 05	2026 week 06	2026 week 07	2026 week 08	2026 week 09	2026 week 10	2026 week 11	2026 week 12	
Non residential Substance Abuse Treatment Facility								1																					
Residential SUD		1																											
Indian Health Service Provider-based Facility			1																										
Independent Clinic				1																									
Hospice									1																				
Urgent Care Facility										1		1																	
Community Mental Health Center											2		1								1	1							
Custodial Care Facility											2												2						
Skilled Nursing Facility		1		1			1		2				1									1							
Nursing Facility		2		1	1		2									1						4		2	1	1			
Temporary Lodging				4		2			2		1	2															3	2	
Psych. Residential	2	3				1		3	1		2	3					3					2					1	1	
On Campus Outpatient Hospital		4	4	3			1		1		3			1	1	1					2								
Group Home	1	5		1	2	1	1	2	1		1		1	3	4	3	1	3	1	3	3			1	1		2	1	
Assisted Living Facility	6		2	1	4	11	3	2	6	1	3	1	1	1	8	1	3	9	8	6	3	1	1	2	1	4	1	11	
Homeless Shelter	4	12	6	10	7	1	5	2	3	4	3	6	6	6	3	3	1	1	1	2	1	3	3	3	4	9	4	2	
School	1	7	7	9	4	2	9	9	4	7	8	6	8	6	8				6	4	2	5	7	5	4	5	10	5	7
Inpatient Hospital	19	7	7	6	5	4	6	2	14	5	14	19	5	17	10	12	5	9	12	9	9	6	13	7	4	9	4	5	
Unassigned	4	13	19	22	6	3	9	12	12	11	9	5	10	13	13	6	10	11	9	15	10	19	6	15	8	11	3	7	
Inpatient Psychiatric Facility	11	10	10	12	12	8	13	10	11	11	7	10	10	13	8	10	10	16	23	5	8	12	13	5	11	5	11	13	
Prison Correctional Facility	18	12	15	27	11	26	12	20	24	20	19	16	18	18	19	15	15	15	24	15	9	20	16	10	21	11	10	14	
Emergency Room Hospital	54	42	42	37	39	32	35	29	32	38	44	32	40	32	47	46	44	28	26	47	37	50	42	40	41	43	38	24	
Other Place of Service	46	64	58	54	66	56	52	61	59	61	59	44	48	48	58	38	60	57	50	15	20	30	23	15	9	10	13	9	
Home	48	57	62	52	56	59	76	54	69	55	77	60	75	62	60	53	51	44	66	51	67	78	61	79	79	47	60	58	
Telehealth	62	51	60	64	92	46	91	69	76	45	61	60	71	75	50	49	75	43	84	71	73	78	69	73	68	92	81	62	
Office	128	114	114	110	135	97	114	103	89	118	123	72	77	89	97	90	101	107	128	142	148	141	122	171	157	148	192	154	

Place of Service -Investigations, percent of total by week



	2025 week 37	2025 week 38	2025 week 39	2025 week 40	2025 week 41	2025 week 42	2025 week 43	2025 week 44	2025 week 45	2025 week 46	2025 week 47	2025 week 48	2025 week 49	2025 week 50	2025 week 51	2025 week 52	2026 week 01	2026 week 02	2026 week 03	2026 week 04	2026 week 05	2026 week 06	2026 week 07	2026 week 08	2026 week 09	2026 week 10	2026 week 11	2026 week 12	
Temporary Lodging				1					1				1																
Indian Health Service Provider-based Facility			1																										
Hospice																													
Urgent Care Facility											1																		
School												1											1						
Non residential Substance Abuse Treatment Facility	1							1																					
Residential SUD		2																						2					
Community Mental Health Center									1						1						1	1						1	
Custodial Care Facility				1							1				1								2			1			
On Campus Outpatient Hospital						1					2		1	1							1								
Nursing Facility						2										1						2				1		1	
Skilled Nursing Facility	1		1	1			1		1				1										1						
Homeless Shelter	1	1		1	1	1	1	1	1				1	1	1									1					
Assisted Living Facility	2	1		4		1	1		1						1						1	1						1	
Psych. Residential	1	2						1			1	1		1			1	1						1	1	2		1	1
Office	3	1	1	3	4	1		1	1	1	2	2	1	1	1	2					2	4	1	1			1	1	
Unassigned	1	3	6	3	1		1	1	2		3		4	1	2	1		3		3	3	1	5	2	2		2	2	
Telehealth		1		5	4	1	1	3	3	2	3	1	3	2	1	5	4	2	7	3	1		4		2	1	4		
Other Place of Service	4	7	5		3	1	3	1	1	4	3			4	2	2	3	1	5	2	1	7	4	4	4	2	3	1	
Group Home	4	4	1	3	3	2		8	2		5	1	3	4	3	3	1	1	4	5	5	2	4	2	5	3	3	4	
Inpatient Hospital	13	6	4	8	4	5	8	2	12	4	12	16	7	11	10	9	8	7	9	9	8	10	10	6	3	7	3	7	
Inpatient Psychiatric Facility	17	12	15	15	16	12	15	10	11	10	11	9	16	14	12	14	14	18	22	9	13	13	15	13	17	14	16	16	
Prison Correctional Facility	16	13	19	28	10	18	15	16	20	22	17	17	15	14	18	15	16	18	31	12	9	19	17	14	22	13	12	13	
Home	14	20	25	20	18	20	19	15	22	24	29	16	17	23	13	17	16	13	13	19	21	27	20	31	26	24	24	28	
Emergency Room Hospital	40	40	48	32	40	31	33	32	34	40	40	33	35	31	47	41	47	37	28	40	38	54	40	49	42	47	40	30	

North Sound BH ASO Walkaway Chart 09/07/25 to 03/21/26

